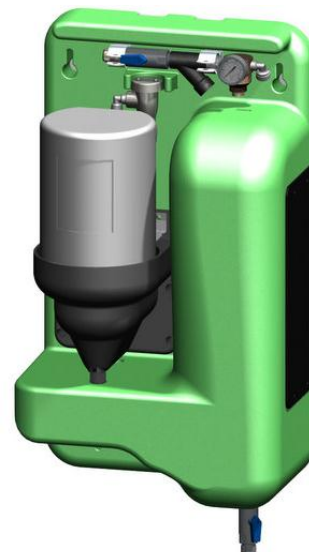


Solv-Ultima[®] 75

Single Product Dissolver System

The Solv-Ultima[®] 75 (SU75) provides diluted solution of one solid product held in an integrated reservoir, ready for on demand pumping or eduction when indicated by the system controller. This unit uses a float-weight and a mechanical solenoid valve system to automatically reconstitute solid chemical concentrates on-site.



SYSTEM FEATURES

- No electricity required
- Pressure regulator designed for 20-40 psig adjustment
- Uses low cost, reliable float technology
- Includes adjustable pressure gauge and removable filter
- Atmospheric siphon breaker included for backflow protection
- Translucent body allows viewing of water level in reservoir
- Takes advantage of the reduced transportation and storage costs, and worker safety benefits of solid chemistry

SYSTEM ADVANTAGES

Uses Reliable, Time-Proven Float Technology

No electric solenoids to burn out, no transformers to fail when current spikes. The result: consistent, reliable performance, reduced down time, and reduced service calls.

Easy to Install

Attach the unit using four bolts, hook the float to the valve, attach the water inlet and the solution discharge tubing – that's it. The unit is ready to go to work.

Designed for Chemical Resistance

Molded parts are made of polypropylene and polyethylene; metal parts are made of Hastelloy for maximum chemical resistance.

SYSTEM SPECIFICATIONS

Net Weight	17 pounds	Flow Rate	1.0 gpm
Ship Weight	19 pounds	Spray Nozzle	90°
Dimensions	14" W x 28" H x 10" D	Mounting	4 anchor bolts
Water Line Requirement	3/8" Make-Up	Assembly & Install Time	10-12 minutes (approx.)
Water Pressure	20-40 psi	Electrical Requirements	None



AP Tech
GROUP, INC.

11411 Williamson Road, Cincinnati, OH 45241 866.489.9831